

# Openserve Web Connect

Scale, Speed, Reliability, Flexibility





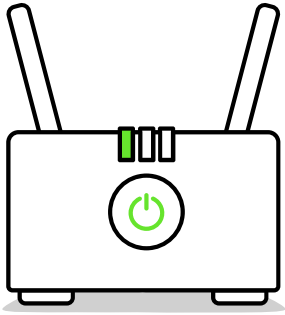
# Every partner needs a **connection**

When choosing a fibre connection for your customer, there are four criteria we believe are the most important:



As SA's national connectivity leader, Openserve meets these criteria and so much more.

We are committed to delivering innovative services and improving the future of our client's businesses.



# Committed to our **connection**

---

Our business is all about building your business, no long-term contracts, easy month-to-month arrangements with tools that provide you with everything you need to manage and grow your customer base.

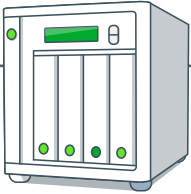
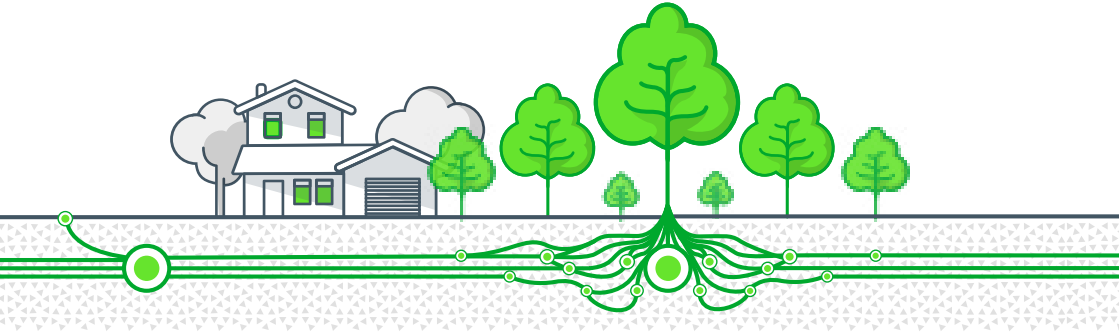
Our product offering, Openserve Web Connect (OWC) is engineered to bring you an end-to-end broadband service, allowing an effortless one stop solution for you and your end-users.

Get your customer connected to SA's most experienced fibre infrastructure provider.

Openserve's Web Connect is part of our ever expanding 160,000km plus of national fibre deployment, all backed by a world class national and international IP network.

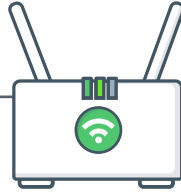
Openserve actively monitors market trends, and our product range is subject to speed and other changes in accordance with these trends.

# Broadband Ecosystem



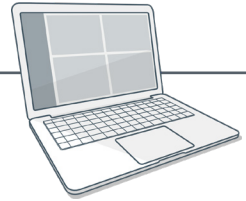
## End-to-End Fibre Access

- 20Mbps download and 10Mbps Upload speeds
- 40Mbps download and 20Mbps Upload speeds



## Internet

- No need for additional OBC bandwidth purchases
- All services will come with an uncapped data package (AUP may be enforced)



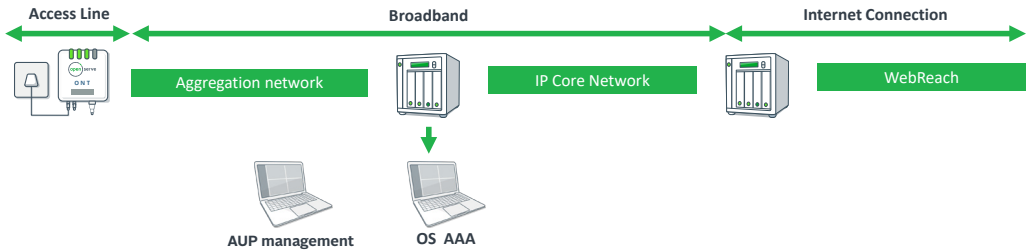
## Customer Premises Equipment

A WiFi enabled ONT will be provisioned with each install, eliminating the need for a router/modem at the premises

## Possible value-added services to offer your customer

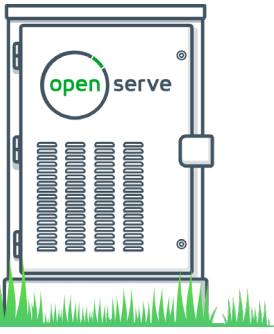
- OTT voice
- Video streaming
- Virtual private networks
- Remote video surveillance
- Smart-home automation
- Remote learning (bundled educational material)

# Network Topography



## Notes:

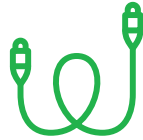
- Username and password does not need to be stored in modem.
- ONT will send all IP traffic to BNG and radius for authentication.
- ISP does not need to authenticate the required traffic
- Openserve will authenticate the user without having to supply username and password



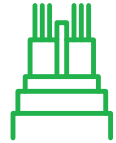
# A connection for **every** **purpose**



Speed options of  
20Mbps or 40Mbps



Asymmetrical services



Provisioned over GPON  
fibre network



Installed as end-to-end  
fibre including Uncapped  
Internet



Backhaul via Metro  
Ethernet network



No long-term contracts.  
Month-to-month  
contracts

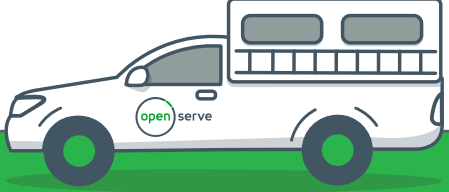


Monthly rental includes free-to-use WiFi enabled ONT in customer's premises (no need for ISP Router)

# Openserve Web Connect Pricing Elements



**Service Activation fee will apply**



**Call Out Fee will apply**

In instances where the Fibre and the correct ONT exists in the end-user premises and no truck roll is required to install the service.

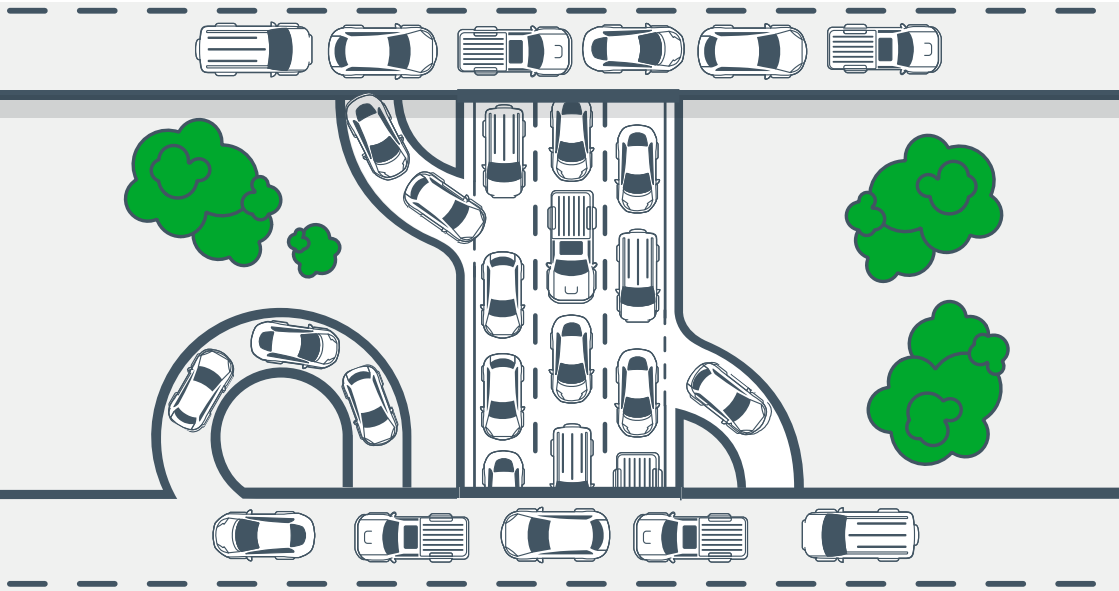
In instances where end-users change their OWC service from one Service Provider to another and no truck roll is required to install the service.

In all instances where the Service Provider has requested Openserve to attend to a fault beyond the Fibre pick-up Point, including the ONT/TCE.

The charge will be waived if the fault was deemed to be an Openserve network or technology issue

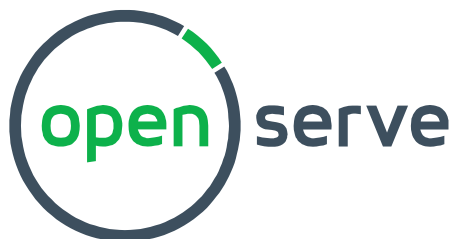
# Openserve **Connect**





# Connecting every mile

- The Openserve Connect (OC) product is a complementary solution exclusively available to Openserve clients who on-sell the Openserve Web Connect (OWC) product to their end-customers.
- The installation of the service includes 8m of trenching/unblocking of pipes.
- Distances greater than 8m will be levied at a p/m rate.
- Openserve can also provide device set-up (includes first hour of set-up)
- Additional set-up will be levied at a per hour rate (over and above the first hour, up to a maximum of 200 hours)



- Connect your customers to the Scale, Speed, Reliability and Flexibility of Openserve Web Connect.
- For more information and pricing, please contact your dedicated Account Manager.

